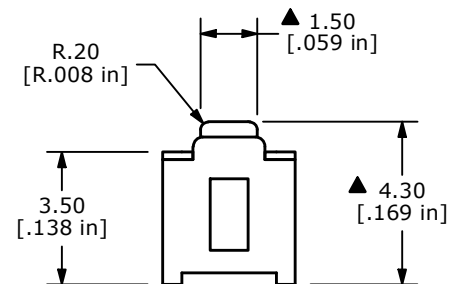
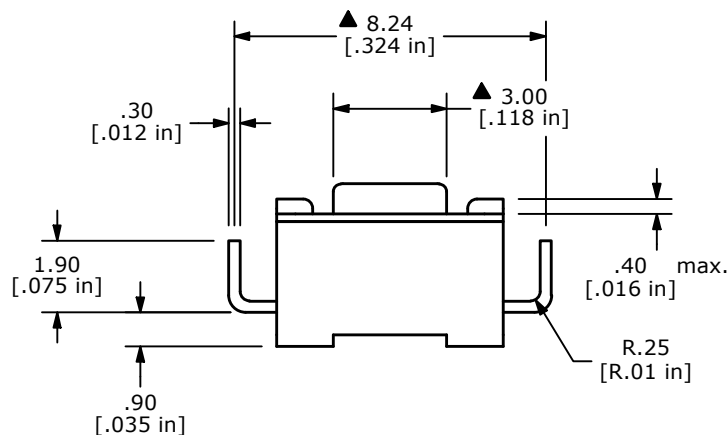
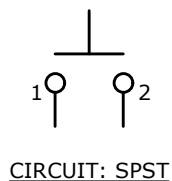
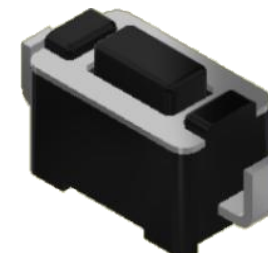
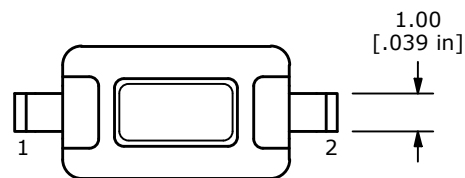


SUGGESTED PCB LAYOUT



- NOTES:
1. ALL DIMENSIONS IN MM [INCH]
 2. TERM. NOS. FOR REF. ONLY
 3. GENERAL TOLERANCE: x.x = ± 0.4
x.xx = ± 0.25
 - ▲ 4. RATING: 50mA @ 12 VDC
 5. TRAVEL: 0.25 mm +0.2 / -0.1
 6. CONTACT RESISTANCE: 100m OHMS MAX.
 7. LIFE CYCLES: 40,000 CYCLES MIN.
 8. PACKAGE: BULK 1,000 PCS PER BAG
 - ▲ 9. OPERATING FORCE: 180 ±50gf
 10. ▲ DENOTE CRITICAL PARAMETER



TITLE TL1107AF180EQ				
SCALE	DATE	DR	DWG	REV
5:1	4/3/2020	MW	P010398	A

A	24244	RELEASE	4/21/20	MW
REV	PCR NO	DESCRIPTION	DATE	BY

THE INFORMATION CONTAINED IN THIS DOCUMENT IS PROPRIETARY TO E-SWITCH AND IS NOT TO BE COPIED OR TRANSFERRED